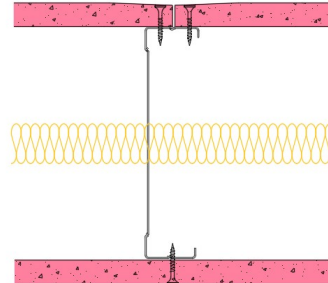


146-B-56(25) - SPEEDLINE System Data Sheet - Version V1 (24-10-23)

SPEEDLINE 146mm 'C' Stud Partition @600mm Ctrs, with BG Gyproc 15mm FireLine each side, 25mm APR



System Performance Breakdown

Fire Resistance:

BS476 Part 22:1987:

Test Ref & Date or Applied Ref & Report:

Max Height:

Thickness:

Duty Grade: BS 5234: Part 2:1992:

Sound Insulation:

60/60 Minutes (Integrity/Insulation).

BTC 17441F - BRE Report P102396-1011A

Refer to Speedline Specification Clause

178 mm. (At Base Track, Excluding Finishes)

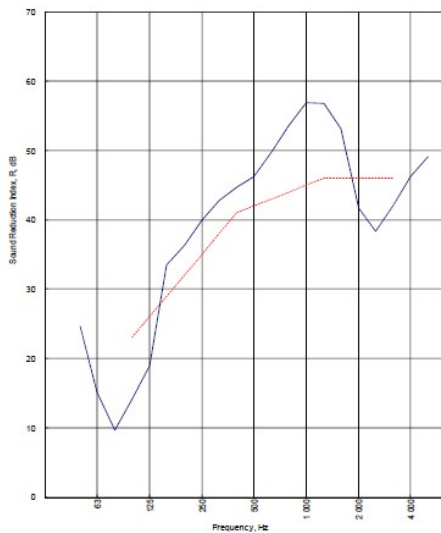
Heavy - Annexes A-F

42 R_w dB, Date Tested or Assessed Against - 70-B-56(25)

APPENDIX A - TEST DATA

Test Code:
H21046AA
Test Date:
19/07/2019

Freq. Hz	R dB
50	24.6
63	15.0
80	9.7
100	14.1
125	18.9
160	33.5
200	36.3
250	40.0
315	42.8
400	44.7
500	46.2
630	49.8
800	53.0
1000	56.0
1250	56.8
1600	53.1
2000	41.7
2500	38.3
3150	42.1
4000	46.2
5000	49.1



Rating according to BS EN ISO 717-1:2013
 R_w (C;Ctr) = 42 (-3;-9) dB
 Max dev. 8.9 dB at 100 Hz

$C_{50-2150}$ = -5 dB	$C_{50-5000}$ = -4 dB	$C_{100-5000}$ = -2 dB
$C_{125-2150}$ = -14 dB	$C_{125-5000}$ = -14 dB	$C_{125-10000}$ = -9 dB

TESTED AT ONE OF THE UKAS ACCREDITED LABORATORIES BELOW

- B.T.C (H-Ref on Graph)
- B.R.E
- AIRO
- S.R.L

Customer: Voestalpine Metsec Plc Dry Lining

BTC 21046A: Page 11 of 14

